

2014 PACIFIC EDUCATION INSTITUTE ANNUAL REPORT

Your investment in Pacific Education Institute's research-based approach to educator development has made us the established leader in Washington State. Thanks to our supporters, PEI enters 2015 poised to take on the big challenges facing science, technology, engineering, and math (STEM) education and the new Common Core requirements. PEI has proven that kids learn better when they go outside, and we're showing teachers how they can connect with local businesses and industries to meet this critical need in a way that benefits local economies, provides a cost effective approach for school districts, and prepares students to be future stewards of our natural resource environment.

Our innovative approach to creating pathways between business and education leaders sets us apart. This year's annual report illustrates our unique community collaborations and partnerships that have been the key to our continued success. In the last year, PEI partnered with the Puyallup Watershed Initiative, Muckleshoot Indian Tribe and Tribal School, Hancock Forest Management, and Governor Jay Inslee's STEM Education Innovation Alliance, driving our path forward in natural resource STEM learning.

PEI is committed to providing every K-12 student in Washington with the opportunity to learn outdoors through our collaboration with school districts. In 2014, we served 497 teachers and 13,913 students, with an overall reach of 42% of Washington school districts.

In the midst of all this collaboration, we released our new PEI guide: Designing High Impact Field Experiences. This latest guidebook provides educators with the planning tools and preparation materials to turn field trips into field experiences, where students engage in critical thinking to meet rigorous science standards.

We are incredibly proud of how far PEI has come in the past year. In 2015, PEI will move forward on integrating applied math and computer science into our guides and materials, ensuring that our work continues to innovate and inspire. Thank you for your continued support!

Margaret Tudor

Margaret Tudor, Ph.D.
Executive Director PEI



Bill Taylor

Bill Taylor
President, Taylor Shellfish Farms
Board President PEI



CHANGING THE LANDSCAPE OF STEM LEARNING



Real Life. Real Knowledge.

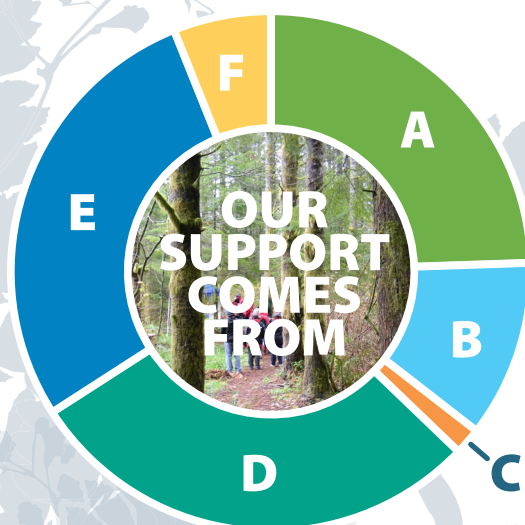
724 Columbia St. NW, Ste 255 • Olympia, WA 98501
Tel: 360-705-9294 • pacificeducationinstitute.org

CHANGING THE LANDSCAPE OF STEM LEARNING

STATEMENTS OF ACTIVITIES AND CHANGES IN NET ASSETS PACIFIC EDUCATION INSTITUTE

Years Ended December 31, 2014 and 2013

	2014	2013
Support and Revenue		
Contributions	\$688,990	\$645,301
Interest	\$453	\$217
Other	\$44,636	\$21,577
Total support and revenue	\$734,079	\$667,095
Expenses		
Programs	\$399,187	\$355,278
General and administrative	\$83,789	\$68,979
Fundraising	\$129,734	\$96,253
Total expenses	\$612,710	\$520,510
Changes in net assets	\$121,369	\$146,585
Net Assets		
Beginning of year		
Unrestricted	\$224,081	\$107,171
Temporarily Restricted	\$96,135	\$66,460
Total beginning of year	\$320,216	\$173,631
End of year		
Board Designated Operating Reserve	\$225,000	--
Unrestricted	\$90,692	\$224,081
Temporarily Restricted	\$125,893	\$96,135
Total end of year	\$441,585	\$320,216



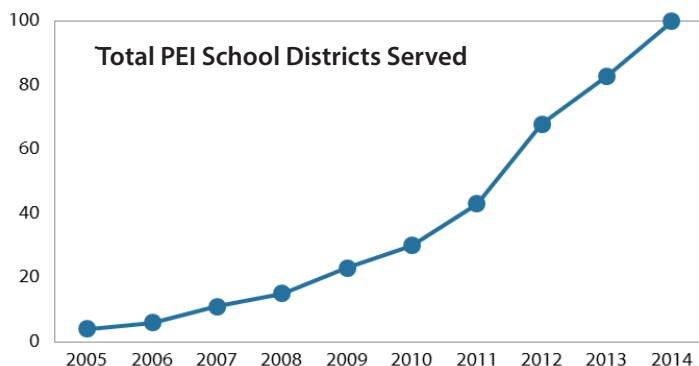
A. Government Grants	24%
B. Business Contributions	11%
C. Individual Contributions	2%
D. Contributions & Services In-Kind	29%
E. Foundation/Tribal Grants	28%
F. Earned Income	6%

2014 MAJOR INDIVIDUAL, CORPORATE, FOUNDATION, TRIBAL AND ORGANIZATIONAL DONORS

American Forest Foundation
 Association of Washington Business
 Association of Washington School Principals
 Baker Foundation
 Bascom Pacific LLC
 Bloedel Timberlands Development
 The Boeing Company
 Broughton Lumber Company
 City of Tacoma, Splash Grant
 Community Foundation of South Puget Sound
 Discuren Foundation
 Fruit Growers Supply Company
 Gordon Thomas Honeywell
 Gottfried and Mary Fuchs Foundation
 Grays Harbor County Marine Resource Committee
 Green Crow
 Green Diamond Resource Company
 Hampton Resources, Inc.
 Hancock Forest Management
 John Warjone
 Merrill & Ring
 Nisqually Indian Tribes
 National Oceanic and Atmospheric Administration (NOAA)
 Olympia Federal Savings
 Olympic Resource Management
 Pacific Coast Shellfish Growers Association
 Pacific West Timber Company LLC
 Port Blakely Tree Farms, L.P.
 Port Gamble S'Klallam Tribe
 Puget Sound Energy
 Puget Sound Partnership
 Rayonier Foundation
 RealNetworks Foundation
 Russell Family Foundation
 Seattle Foundation Pillar Advised Fund
 Sierra Pacific Industries
 SSA Marine
 Stevenson Land Company
 Stimson Lumber Company
 Sustainable Forestry Initiative
 Taylor Shellfish Farms
 Verizon
 Washington Association of School Administrators
 Washington Education Association
 Washington Forest Protection Association
 Washington State Potato Commission
 Washington State School Directors' Association
 Washington Sustainable Forestry Initiative
 State Implementation Committee
 Weyerhaeuser

2014 PEI ANNUAL REPORT

BY THE NUMBERS 2005-2014



2014 TEACHERS 497
2014 STUDENTS 13,913

 **100**

School districts reached (42% of all WA school districts)

 **8**

PEI FieldSTEM guides for outdoor education

 **8,789**

K-12 teachers received PEI professional development

 **200+**

Community providers, partners, and mentors

 **221,216**

Total students engaged in PEI FieldSTEM studies and projects

PEI ACCOMPLISHMENTS 2014

- In May, Pacific Education Institute began consulting with **Muckleshoot Indian Tribal Leaders** to create a robust, experiential curriculum focusing on forest ecology and forest management, alongside traditional ecological knowledge. Our November workshop held on the Tomanamus Forest kicked off our collaboration and reached over 77 Muckleshoot Tribal School educators from every grade level. Our largest workshop to date!
- At the 2014 **Summer Institute** in June, teachers from many districts spent two days immersed in integrated learning around Common Core English Language Arts and Next Generation Science Standards using the outdoors as the learning laboratory. Donna Chang reported that many of her Tacoma School District 8th grade class demonstrated greater understanding of what was required for essay/narrative assessments than other 8th grade students whose teachers did not attend the Institute.
- PEI worked hard to secure a partnership with **AmeriCorps VISTA** in 2014 and we welcomed our first VISTA volunteer Max Thom to the PEI team in August. Max is an applied mathematics graduate from the Evergreen State College, and his work with program evaluations is helping us demonstrate how PEI contributes to student engagement in rural and impoverished school districts.
- On August 14, 2014, Governor Inslee announced the members appointed to the **STEM Education Innovation Alliance**. PEI's Executive Director, Dr. Margaret Tudor, was invited to participate as a member, furthering our goal of bringing FieldSTEM more deeply into the STEM conversation.
- We proudly released our **NEW PEI Guide: Designing High Impact Field Experiences** in Fall 2014. To commemorate this accomplishment, we launched the guide in style at a wine and cheese reception held at The Mountaineers Seattle Program Center. The first pilot workshop on Whidbey Island took place in September, and teachers are already adapting their traditional field trips to FieldSTEM experiences.
- PEI was honored to participate on the steering committee in 2014 for the **Puyallup Watershed Initiative's** Environmental Education Community of Interest (EECOI) and is the lead organization in building the new professional development opportunities and bringing partners together.
- New materials developed and released by PEI in 2014 include **English Language Arts (ELA) Performance Tasks**, including topics such as Water Quality, Integrated Pest Management and Farms, and Forestry. Performance tasks require students to engage with a scenario-based problem, research information presented in various media, extract key ideas from the information, answer research questions and compose an essay or speech that presents their original opinions and ideas supported by text based evidence.

"Thank you for an incredible workshop full of rich content ideas to begin weaving into our current curriculum. I came away refreshed, renewed and reinvigorated to continue developing authentic learning opportunities for the students of Forks."

Forks, WA High School Science Teacher



Muckleshoot Tribal Workshop

PEI Mission: Using the environment as a context, the Pacific Education Institute provides schools and teachers with tools and support to help students become socially and scientifically literate citizens, adept at critical thinking and engaged in a lifetime of discovery.



PACIFIC EDUCATION INSTITUTE BOARD OF DIRECTORS 2014

Dr. Margaret Tudor – Executive Director

Bill Taylor – President

President, Taylor Shellfish Farms

Michael Papritz – Vice-President

High School Teacher representing
Washington Education Association (WEA)

Paul Wing – Treasurer

Vice President and General Manager, Green Diamond Resource Company

Cindy Zehnder – Secretary

Vice President, Gordon Thomas Honeywell, Governmental Affairs

Mike Mosman – Immediate Past President,

Vice President of Resources, Port Blakely Tree Farms L.P.

Robert Bass – North Cascades Regional Manager,
Hancock Forest Management Inc.

Dr. Alan Burke – Executive Director,

Washington State School Directors Association

Mark Doumit – Executive Director,

Washington Forest Protection Association

Marty Fortin – Director, Outdoor Learning

Center, Cispus and Chewelah Peak

Jay Gordon – Executive Director, Washington State Dairy Federation

Mike Grayum – Executive Director,

Northwest Indian Fisheries Commission

Dr. Bill Keim – Executive Director,

Washington Association of School Administrators

Gary Kipp – Executive Director,

Association of Washington School Principals

**Dr. Martha Kurtz – Director, Center for Excellence in Science
and Mathematics Education, Central Washington University**

Judy Schurke – Strategist, Executive Management and Leadership

**Ron Shultz – Director of Policy and Intergovernmental
Relations, Washington State Conservation Commission**

Chris Voigt – Executive Director, Washington State Potato Commission

PEI STAFF 2014

Dr. Margaret Tudor

Executive Director

Breanna Trygg

Program Director

Shannon Michlitsch

Development Director

Karen Weiss

Finance Director

Neesha Oliver

Program & Development Assistant

Gigi Williams*

Administrative Assistant

Max Thom

AmeriCorps VISTA

* Retired September 2014