

- 1.) Lay all 30 cards out face down, 5 x 6
- 2.) Starting with the youngest player and going left, players take turns
- 3.) During a turn a player flips two cards, seeking to match an animal to the place it lives
- 4.) If no match is found after two cards are flipped, the player flips the cards back over and their turn is over
- 5.) When a match is found, the player takes both cards off the board and adds up the points of the two cards together (and adding to any previous matches) to find their score
- 6.) Nudibranch cards can be kept by any player that flips one, and do not match any substrate. They are considered a "free" flip, so the player continues until they've flipped two non-nudibranch cards. A player who has a Nudibranch card can use it AT ANY TIME to "Poison" another player, forcing them to give up one of their animal cards, thus subtracting its value from their total.
- 7.) Play continues until all cards are matched, or no more matches can be made
- 8.) When play ends each player counts up their points, the one with the most wins!
- 9.) In the event of a tie, a player that still holds a Nudibranch wins. If both or neither player has a Nudibranch card the player with the most cards wins. If players have the same number of points, cards, and Nudibranchs, then the remaining players shout "Symbiosis!" and high-five
- 10.) If you add your own special cards, you can write a rule about them here
- 11.) **This game is free to share with anyone, always, forever.**

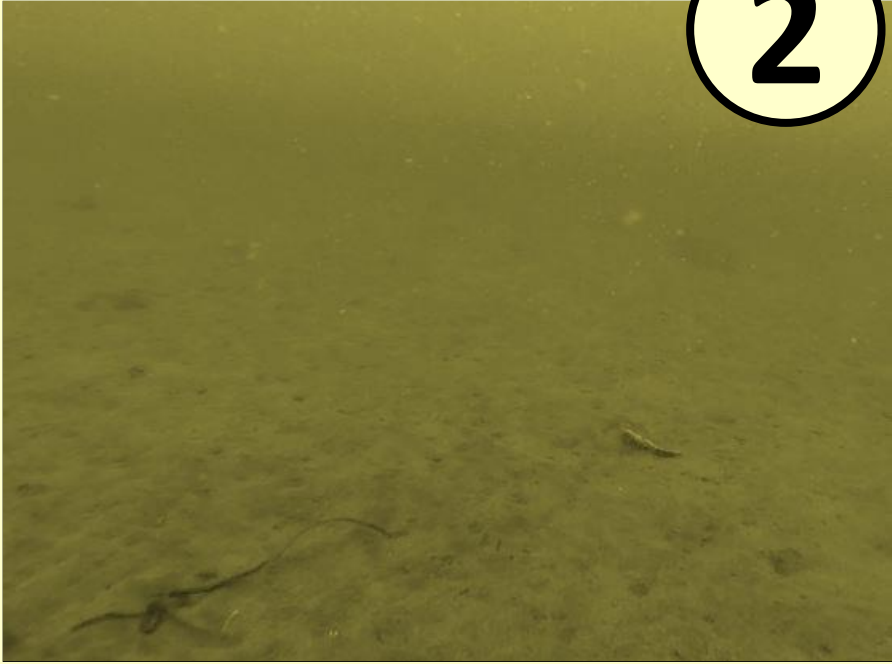
Love,

The Well-Adapted Scuba Diver

# Salish Sea Subtidal Shuffle Rules:

Mud

2



**Matches:**

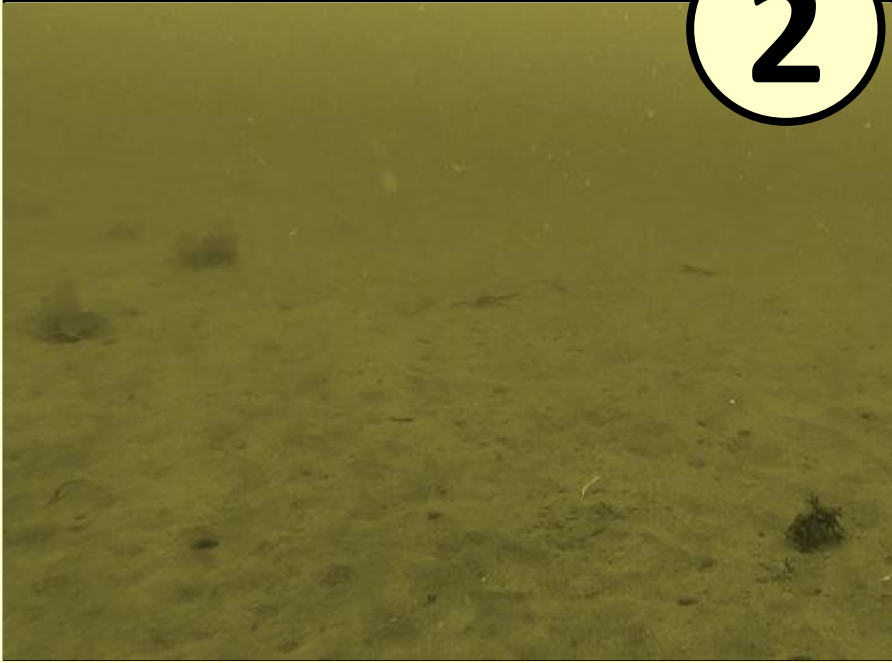
Geoduck, Sunflower Star,  
Crescent Gunnel

*"My name is Mud. Not to be confused with  
Bill, or Jack, or Pete, or Dennis. My name is  
Mud. It always been."* *-Les Claypool*

Salish Sea  
Subtidal  
Shuffle

Mud

2



**Matches:**

Geoduck, Sunflower Star,  
Crescent Gunnel

*"They teach anything in universities today.  
You can major in mud pies."*

*-Orson Welles*

Salish Sea  
Subtidal  
Shuffle

Fine Sand

3



**Matches:**

Geoduck, Sunflower Star

*"Write in the sand the flaws of your friend."*

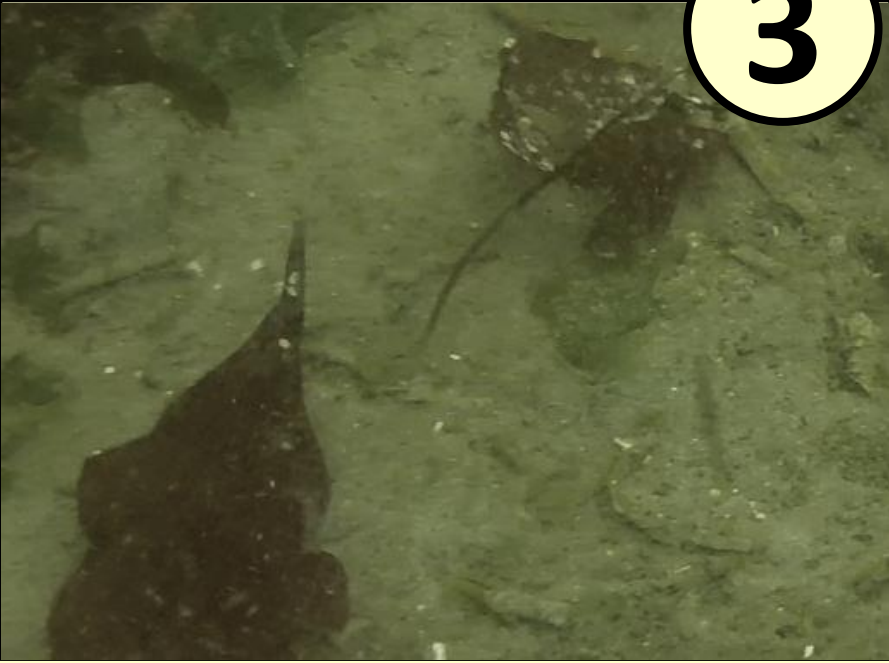
*-Pythagoras*

Salish Sea  
Subtidal  
Shuffle



Fine Sand

3



**Matches:**

Geoduck, Sunflower Star

*"Life lasts but a few scratches of the claw  
in the sand."*

*-Wisława Szymborska*

Salish Sea  
Subtidal  
Shuffle

Rough Sand

3



**Matches:**

Pacific Sand Lance,  
Sunflower Star

*"What we know is to what we do not know,  
as a grain of sand is to the beach."*

*-Ivan Panin*

Salish Sea

Subtidal

Shuffle

Rough Sand

3



**Matches:**

Pacific Sand Lance,  
Sunflower Star

*"I am the infinite sea, and all worlds are  
but grains of sand upon my shore."*

*-Khalil*

Salish Sea

Subtidal

Shuffle



## Rock Pile

1



### Matches:

Sunflower Star, Red Urchin, Giant Pacific Octopus, Wolf Eel, Rockfish, Mosshead Warbonnet, Crescent Gunnel, Puget Sound King Crab

*"Geologists have a saying - rocks remember."*

*-Neil Armstrong*

Salish Sea  
Subtidal  
Shuffle



## Rock Pile

1



### Matches:

Sunflower Star, Red Urchin, Giant Pacific Octopus, Wolf Eel, Rockfish, Mosshead Warbonnet, Crescent Gunnel, Puget Sound King Crab

*"The single most powerful thing I can be is to be myself."*

*-Dwayne Johnson*

Salish Sea  
Subtidal  
Shuffle

## Kelp Forest

1



### Matches:

Crescent Gunnel, Red Urchin,  
Quillback Rockfish, Puget Sound  
King Crab

*"Every time I slip into the ocean, it's like  
going home."*

*-Dr. Sylvia Earle*

Salish Sea

Subtidal

Shuffle

## Kelp Forest

1



### Matches:

Crescent Gunnel, Red Urchin,  
Quillback Rockfish, Puget Sound  
King Crab

*"I love the ocean. I've always liked the blue,  
so tranquil and peaceful and gliding. And  
the fear of it."*

*-Susan Janet Ballion*

Salish Sea  
Subtidal  
Shuffle



Empty Bottle

2



**Matches:**

**Pacific Giant Octopus, Crescent  
Gunnel, Mosshead Warbonnet**

*"I looked into that empty bottle and I saw  
myself."*

*-Grace Metalious*

Salish Sea  
Subtidal  
Shuffle

Empty Bottle

2



**Matches:**

**Pacific Giant Octopus, Crescent  
Gunnel, Mosshead Warbonnet**

*"If you accept the situation, you will find  
strength for strategic adaptation."*

*-Lailah Gifty Akita*

Salish Sea  
Subtidal  
Shuffle



# Geoduck

(*Panopea generosa*)

3



**Matches: Mud, Fine Sand**

*Did You Know? Geoducks are the world's largest burrowing clam, and can live to be 168 years old! What happened 168 years ago today?*

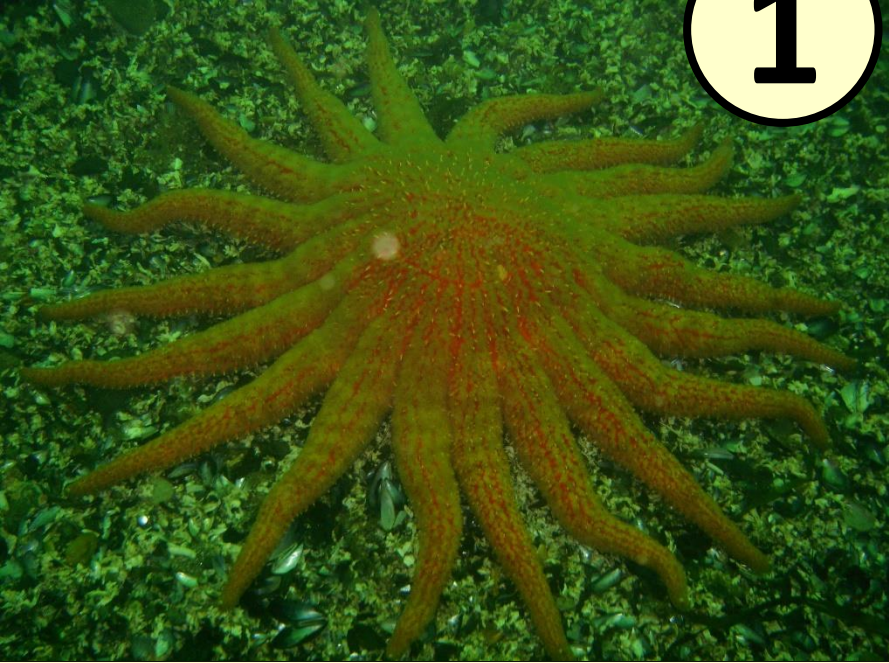
Salish Sea  
Subtidal  
Shuffle



# Sunflower Star

(*Pycnopodia helianthoides*)

1



**Matches: Mud, Fine Sand,  
Rough Sand, Rock Pile**

*Did You Know? Sunflower Stars are the largest and fastest star in Puget Sound, weighing up to 11 pounds, and traveling at breakneck speeds of more than 1/4mph!*

Salish Sea  
Subtidal  
Shuffle

## Pacific Sand Lance

*(Ammodytes hexapterus)*

4



### Matches: Rough Sand

*Did You Know? So many animals eat Pacific Sand Lance that biologists often refer to them as "The potato chip of the Salish Sea"!*

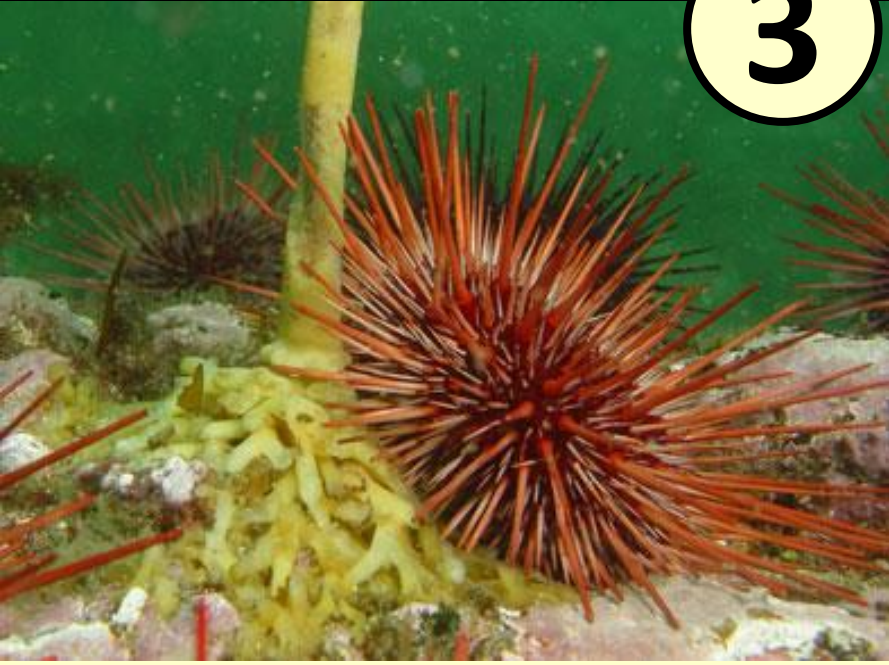
Salish Sea  
Subtidal  
Shuffle



## Red Urchin

(*Mesocentrotus franciscanus*)

3



**Matches:** Rock Pile, Kelp Forest

*Did You Know? Juvenile Red Sea Urchins prefer to hide beneath fully grown adults, which they find by sense of smell!*

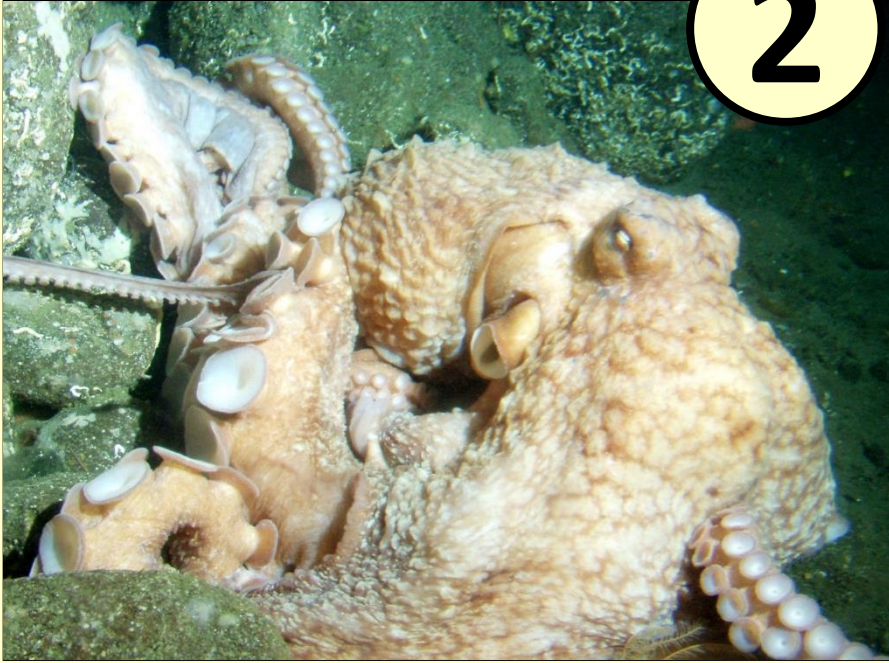
Salish Sea  
Subtidal  
Shuffle



# Giant Pacific Octopus

(*Enteroctopus dofleini*)

2



**Matches:** Rock Pile, Empty Bottle

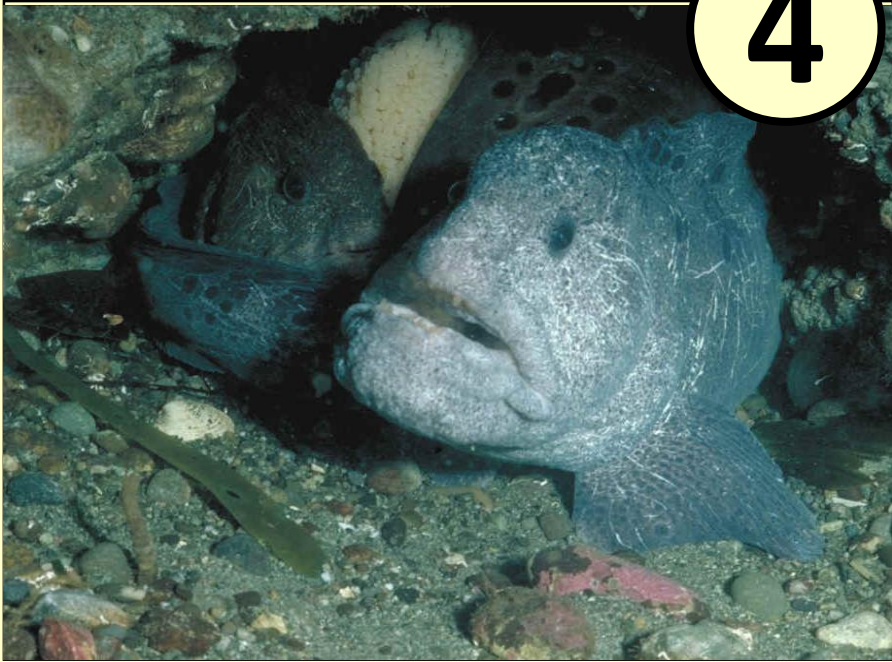
*Did You Know? Giant Pacific Octopuses are very intelligent, can solve puzzles, and even recognize different people!*

Salish Sea  
Subtidal  
Shuffle

# Wolf Eel

(*Anarrhichthys ocellatus*)

4



## Matches: Rock Pile

*Did You Know? Wolf Eels often mate for life, with a male and female sharing a burrow or crevice for up to 25 years! Happy Silver Anniversary, you two!*

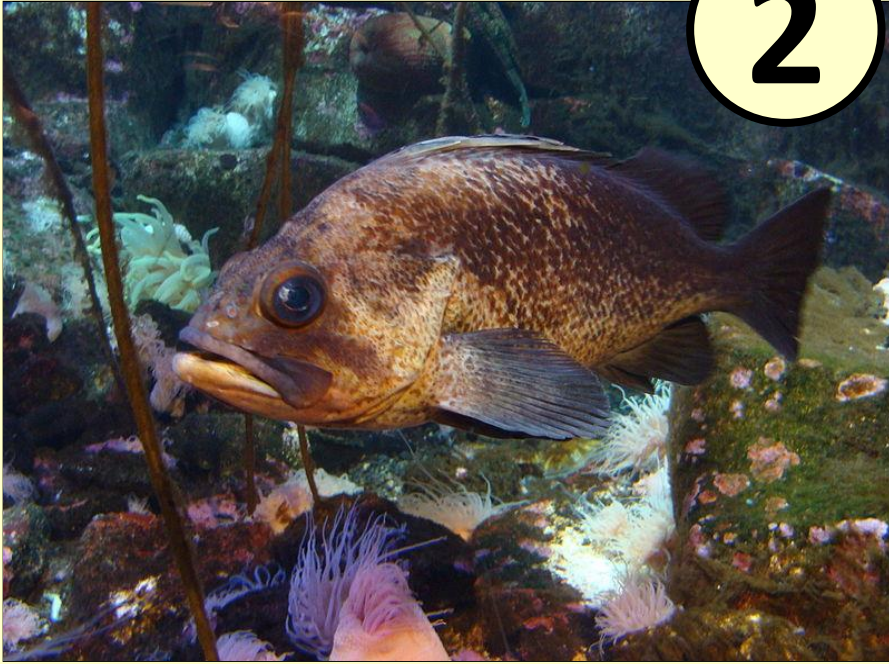
Salish Sea  
Subtidal  
Shuffle



# Quillback Rockfish

(*Sebastes maliger*)

2



**Matches:** Rock Pile, Kelp Forest

*Did You Know? Quillback Rockfish have venomous spines on their backs and can give birth to thousands of live young! Go mom!*

Salish Sea

Subtidal

Shuffle



# Crescent Gunnel

(*Pholis laeta*)

1



**Matches:** Kelp Forest, Empty Bottle, Rock Pile, Mud

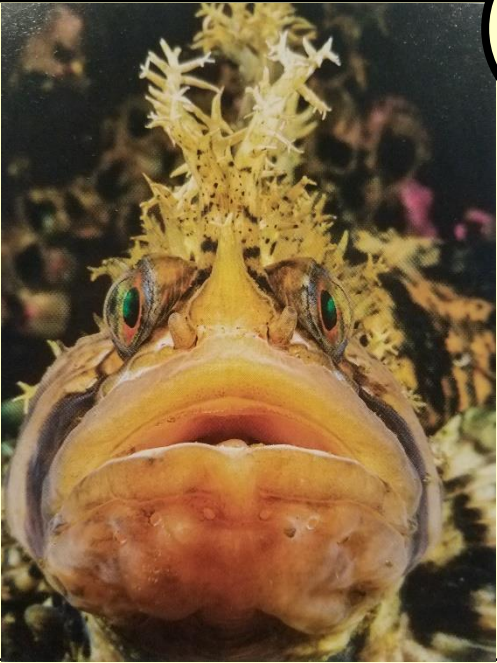
*Did You Know? Crescent Gunnels are found in both shallow and deep water, but can also breathe air! The best of both worlds!*

Salish Sea  
Subtidal  
Shuffle

## Mosshead Warbonnet

*(Chirolophis nugator)*

2



**Matches:** Rock Pile, Empty Bottle

**Holding this card blocks other player's nudibranch attacks!**

*Did You Know? The Mosshead Warbonnet is one of the few fish that can eat a nudibranch without being poisoned!*

Salish Sea  
Subtidal  
Shuffle

# Puget Sound King Crab

(*Lopholithodes mandtii*)

3



**Matches:** Rock Pile, Kelp Forest

*Did You Know? Puget Sound King Crabs have ten legs, like other crabs, the last two are hidden inside their carapace!*

Salish Sea

Subtidal

Shuffle



## Red Irish Lord

*(Hemilepidotus hemilepidotus)*

4



**Matches: Any Habitat**

*Did You Know? Red Irish Lords are masters of camouflage and can change the colors of their bodies to blend in almost anywhere!*

Salish Sea  
Subtidal  
Shuffle

# Scuba Diver

(*Homo sapiens "subaqueous"*)

0



## Matches: Any Habitat

*Did You Know? Scuba Divers have many different adaptations. This one has a thick coat of hair and insulating layer of blubber to protect him from Puget Sound's cold waters! This one also likes making games.*

Salish Sea  
Subtidal  
Shuffle

# Opalescent Nudibranch

*(Hermisenda crassicornis)*



**Keep this card when flipped and continue as if nothing happened. Discard it at any time to “Poison” another player, making them discard one Animal Card.**

*Did You Know? The Opalescent Nudibranch can crawl upside-down along the water's surface as it hunts for jellies!*

Salish Sea  
Subtidal  
Shuffle



## Yellow-Rimmed Nudibranch

*(Cadlina luteomarginata)*



**Keep this card when flipped and continue as if nothing happened. Discard it at any time to “Poison” another player, making them discard one Animal Card.**

*Did You Know? The Yellow-Rimmed Nudibranch feeds mostly on sponges. Look out SpongeBob!*

Salish Sea  
Subtidal  
Shuffle

## Red Flabbelina Nudibranch

*(Flabellina triophina)*



**Keep this card when flipped and continue as if nothing happened. Discard it at any time to “Poison” another player, making them discard one Animal Card.**

*Did You Know? The red cores of the cerata (frills) on a Red Flabellina's back are actually extensions of its digestive tract!*

Salish Sea  
Subtidal  
Shuffle

## Spanish Shawl Nudibranch

(*Flabellina iodinea*)



**Keep this card when flipped and continue as if nothing happened. Discard it at any time to “Poison” another player, making them discard one Animal Card.**

*Did You Know? The Spanish Shawl Nudibranch is named for its bright colors and dancing movements, like the scarves of Spanish Flamenco dancers! Olé!*

Salish Sea  
Subtidal  
Shuffle



# Giant Nudibranch

*(Dendronotus iris)*



**Keep this card when flipped and continue as if nothing happened. Discard it at any time to “Poison” another player, making them discard one Animal Card.**

*Did You Know? The Giant Nudibranch can grow to be 12" long, and is known for rearing back and diving head-first into the anemones it eats!*

Salish Sea  
Subtidal  
Shuffle

## Noble Sea Lemon Nudibranch

*(Peltodoris nobilis)*



**Keep this card when flipped and continue as if nothing happened. Discard it at any time to “Poison” another player, making them discard one Animal Card.**

*Did You Know? While the Noble Sea Lemon Nudibranch has rough skin like a lemon peel, and gives off a pleasant citrus smell, it makes terrible lemonade! Yuck! (never eat a nudibranch)*

Salish Sea  
Subtidal  
Shuffle

## Blank Substrate Card

#

Pic of substrate goes here. Make sure it's public domain or used with permission:

**Matches: Some animals,  
the more, the lower the  
point value**

*"You can build your own cards to add to the game. A relevant quote goes here."*

*-The Well-Adapted Scuba Diver*

Salish Sea  
Subtidal  
Shuffle



## Blank Animal Card

#

Pic of animal goes here. Make sure it's public domain or used with permission:

**Matches: Places, the more, the lower the point value**

**If it has a special ability it goes here in red, centered**

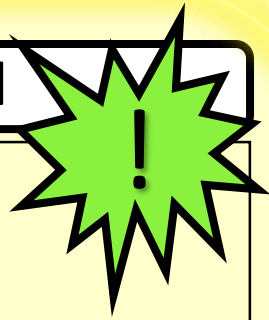
*Did You Know? That when you add your own animal cards a fun fact or two goes here? What a thoughtful design! Wow!*

Salish Sea

Subtidal

Shuffle

## Blank Nudibranch Card



Pic of nudibranch goes here. Make sure it's public domain or used with permission:

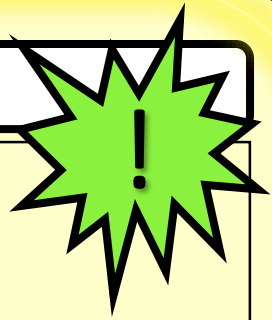


**Keep this card when flipped and continue as if nothing happened. Discard it at any time to “Poison” another player, making them discard one Animal Card.**

*Did You Know? Your own Nudibranch cards also get fun facts! And why shouldn't they? They deserve it!*

Salish Sea  
Subtidal  
Shuffle

## Blank Special Card



Pic of special thing goes here. Make sure it's public domain or used with permission:



**This is where you write the effect of the other special card you've created.**

*Did You Know? The Salish Sea is full of amazing life forms with incredible abilities. Write about this one here.*

Salish Sea  
Subtidal  
Shuffle